

PIVOT SWING DOOR

www.eswindows.com

ES-PSD5030T



System description

- Pivot swing door system.
- Frame depth: 5".
- Impact door.
- Treshold ADA.
- Desing for multiple options of glass and panel phenolic.

Features

- Thermal break system for improved performance and insulation.
- Multipoint lock.
- Available in multiple finishes, anodized, painted or with wood grain.

Configurations



Phenolic panel door

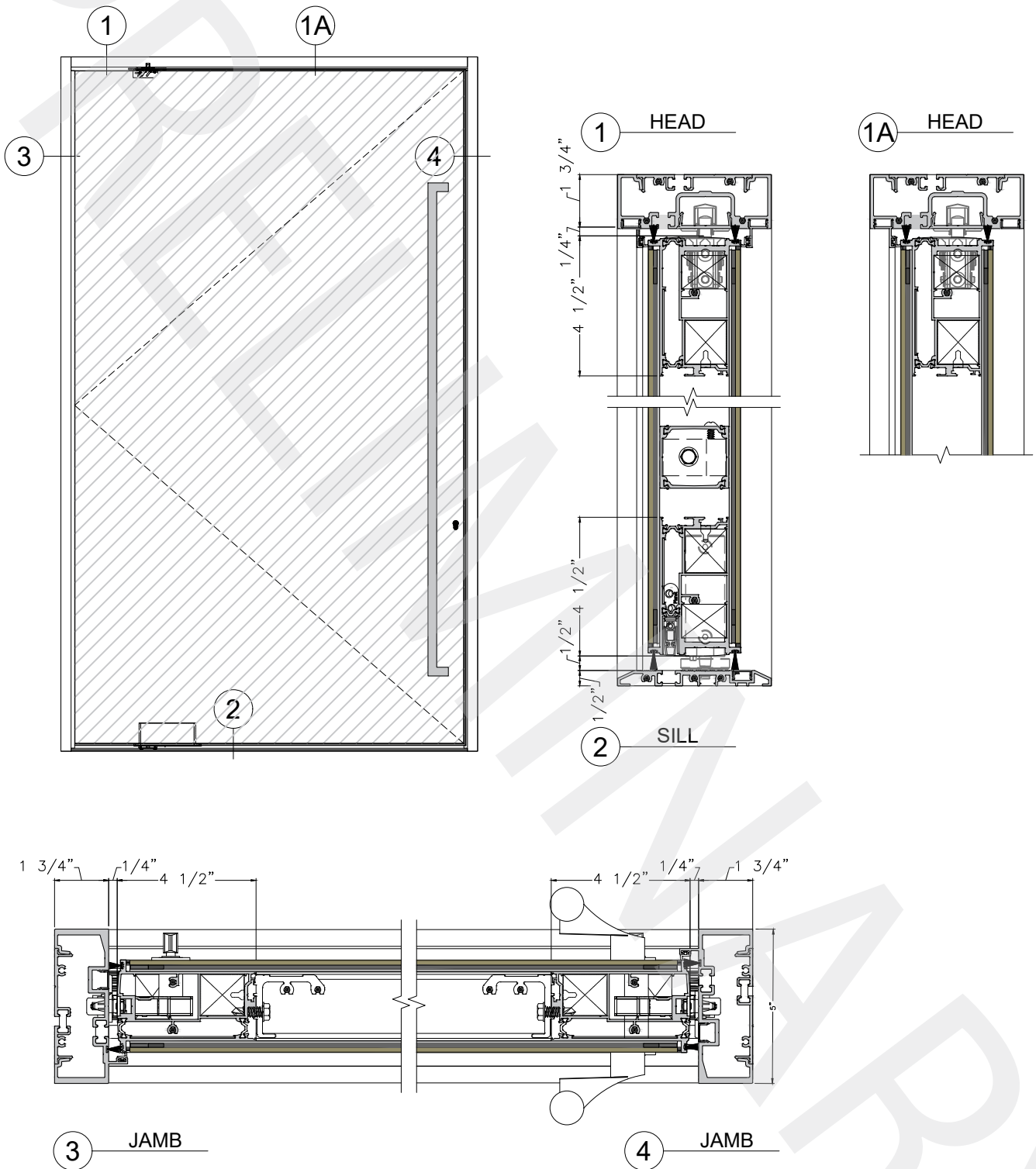


Glass door

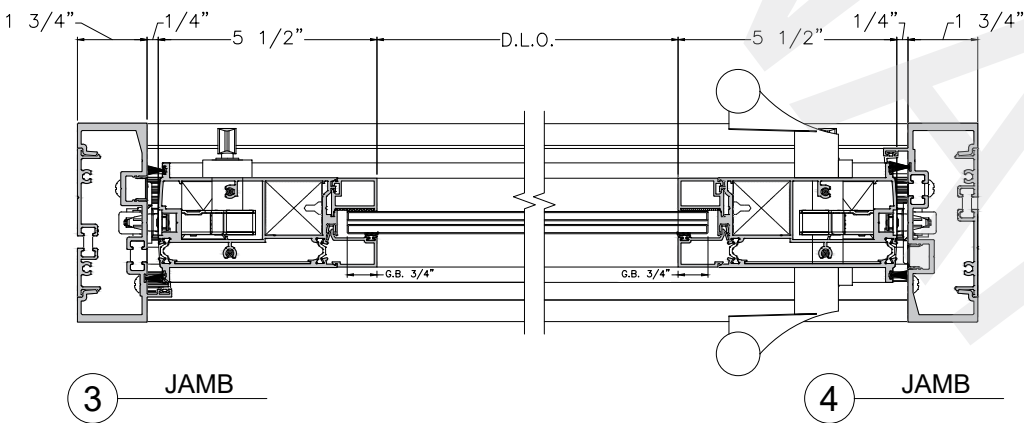
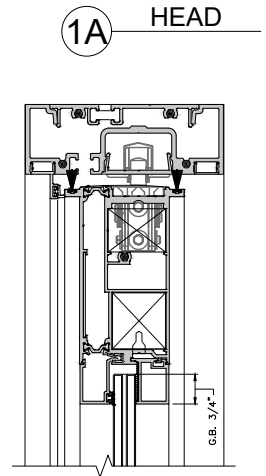
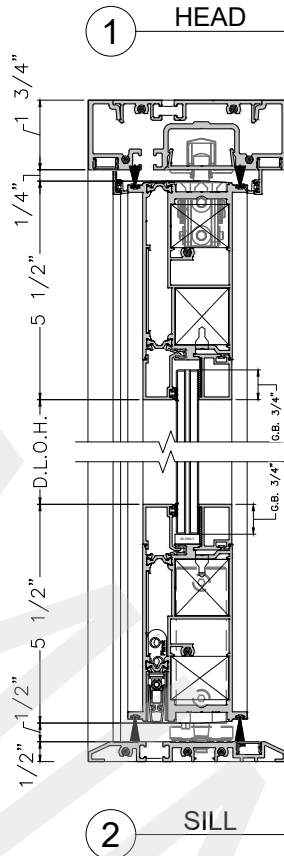
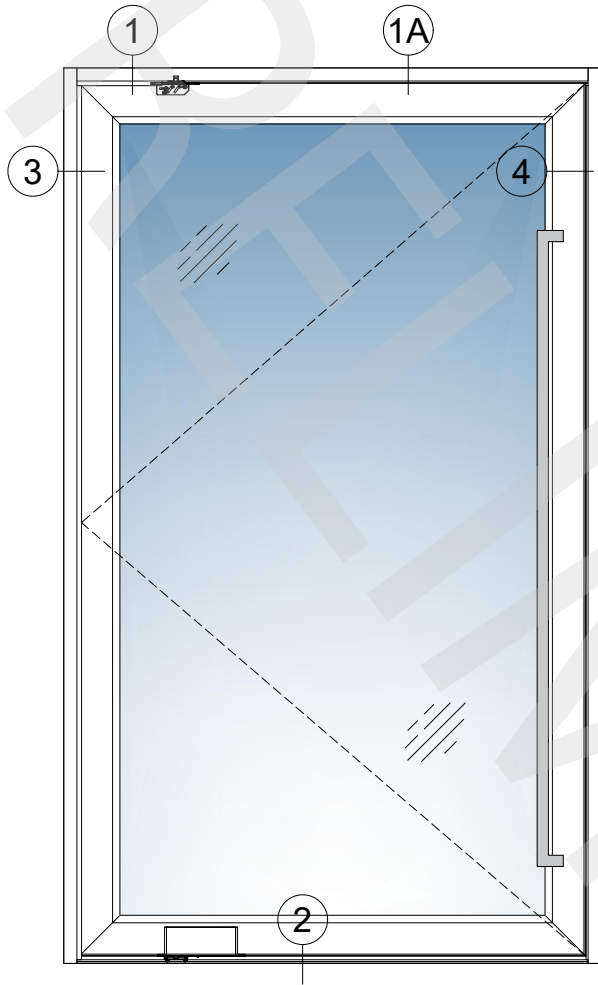
Available finishes



System details

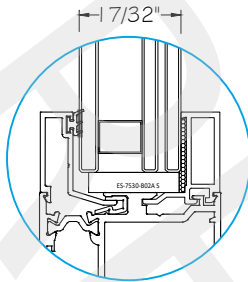


System details



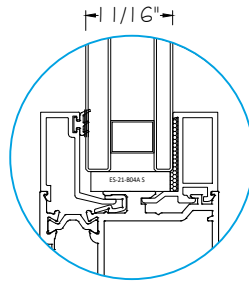
Glass options

INSULATED LAMINATED GLASS



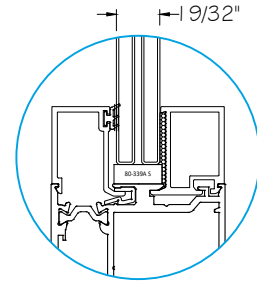
G1

INSULATED GLASS



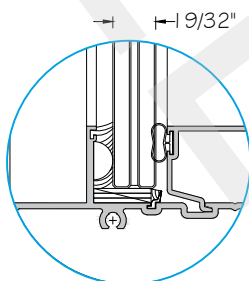
G2

LAMINATED GLASS



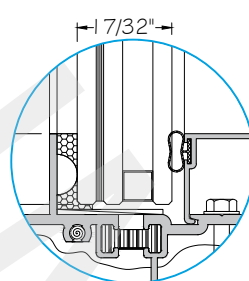
G3

LAMINATED GLASS



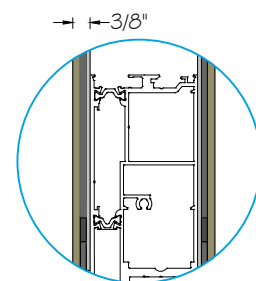
G4

INSULATED LAMINATED GLASS



G5

PHENOLIC PANEL



G6

- G1 1/4" TEMP. GLASS + 1/2" SPACER + 3/16" CLEAR HS GLASS + 0.090" SGP + 3/16" CLEAR HS GLASS.
- G2 5/16" CLEAR HS GLASS + 1/2" SPACER + 1/4" CLEAR HS GLASS.
- G3 1/4" CLEAR HS GLASS + 0.090" SGP + 1/4" CLEAR HS GLASS.
- G4 1/4" CLEAR HS GLASS + 0.090 INTERLAYER SENTRYGLASS + 1/4" CLEAR HS GLASS.
- G5 1/4" HS. GLASS + 0.090" INTERLAYER TROSIFOL PVB + 1/4" HS. GLASS + 3/8" SPACER + 1/4" TEMP. GLASS.
- G6 0.16" PHENOLIC PANEL + 1/8" SEALANT + 0.078" ALUMINUM SHEET.

GLASS FINISH: PAINTED, SERIGRAPHY & DIGITAL PRINTED.

For more information please contact TECNOGLASS® or visit www.tecnoglass.com.

Aluminum

ALLOY 6063-T6
ALLOY 6005-T5

For further information about aluminum and finishes, consult ALUTIONS®.

Measurements

Maximum size:

Width: 72".
Height: 120".

Sealant

APROVED SILICONE SEALS:

WEATHERPROOFING SILICONE:

Used to seal profile unions to avoid air and water infiltration.

- Dowsill 791

STRUCTURAL SILICONE:

Besides acting as a sealant it capable to support high loads.

This silicone is commonly used to support the glass in facades and hurricane resistant products.

- Dowsill 983
- Dowsill 995